



EnviroBionics, Inc
Because Health Matters

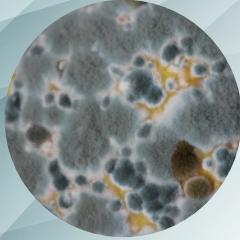
SPECIALIZED MICROBIOLOGY LABORATORY



About EnviroBiomics?

Extensive Environmental DNA Testing and Human Health Laboratory
Leading DNA Testing in the US and the World Testing

Mold Lab.



Our Testing?

Mold, Bacteria, Mycotoxins, Allergens, Endotoxins.
Environmental and Human Actino Score® and
Actino Index®, Environment and Human Test

Trust and Experience?

Experience in Research and Innovation.
Reliable Data that People can Trust Since 2016.



Objective?

Healthy Environment and Healthy Families
Fast and Accurate Microbial & Toxin Testing Always
Exceed your Expectations with our High-Quality Services

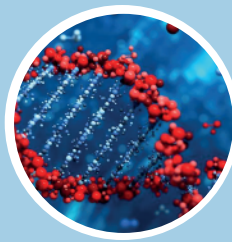
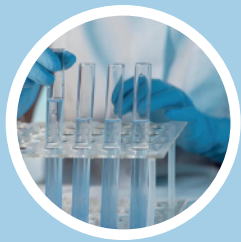
Collaborate?

Our Best References are our Happy Clients
We Partner with Environmental Consultants and Specialists (IEP)
We Partner with Clinical Practice, Naturopathic and Traditional
Doctors.





Indoor Environmental illness is a condition that affects a large group of the general population as some individuals are very susceptible to an environmental mixture of mold spores, bacteria, mycotoxins, biotoxins, endotoxins, and associated components, plus indoor airborne particles. Our testing services are for medical and environmental professionals concerned with indoor mold and bacteria-related conditions. Most of our service on dust collection with the Swiffer or Vacuum cone and testing is very sensitive qPCR or Next Generation Sequencing of DNA targets.



ERMI Score:

By far the most popular and commonly used test for indoor mold assessment. This test is for 26 Toxic mold plus 10 Control mold or reference mold species; the ERMI test provides a score to help with the interpretation. However, the most crucial part of the test is not the score but the individual values for each toxic mold or Group 1 expressed in Spore Equivalent per mg of dust sample (SE/mg). Our report will include a Star symbol to indicate elevated mold species, from 1-star is 10-fold, 2-stars are 100-fold, and 3-stars are 1,000-fold or more elevation.

The second score in this report is a HERTSMI-2 score, developed by Dr. Shoemaker to help patients with CIRS, Chronic Inflammatory Response Syndrome. Individual BE/mg levels and the actual score are also significant for this test, but a trained and experienced professional should make the final interpretations.



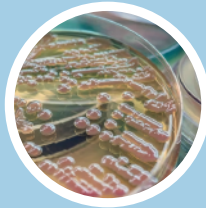


ERMI Plus/ HERTSMI2 Plus:

This is the same as the ERMI or HERTSMI-2 test, but in this option, you can pick additional mold species, up to 5 species, from a list of 32 molds each one for 15 USD more than the base price of the ERMI. This option can help to complement the ERMI/HERTSMI-2 as needed. The list includes several Fusariums, Penicillium, Aspergillus, Candida, and bird-bound mold species like Cryptococcus Chlamidophila Histoplasma, and dust-toxic bacteria Mycobacterium and Streptomyces Griseus.

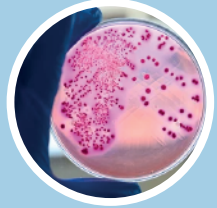
Endotoxins:

This is a poly sugar lipid molecule found in the outer membrane of gram-negative bacteria primary colonizers of water-damaged buildings; dust sample collection should be away from the visible source to avoid misleading results; the normal levels are 100 EU/mg or less, however with pets, cats, and dogs and in building close to farmland this number is 200 EU/mg or less.



Actino Score/Index:

This test measures gram-positive and gram-negative bacteria in dust samples; the sample collection is the same as the previous two tests; you can use a Swiffer cloth or a Vacuum cone; the report has two calculated values, the Actino Score, a measure of water damage, and the Actino Index, a biomarker for toxic bacteria. Actino is Gram Positive bacteria, many of which produce antibiotics and other valuable compounds. Still, at the same time, they are the source of many biotoxins and are essential to consider in patients with biotoxins illness. This test also measures gram-negative at the species level.



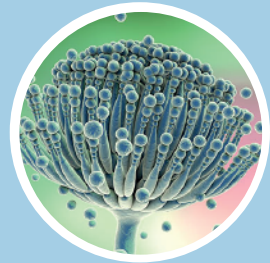
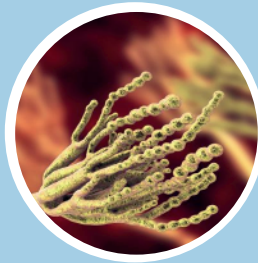


Mold Score:

Similar to ERMI but uses Next Generation Sequencing to detect not only those species in ERMI but Fusarium, Candida, and many other mold species of interest that will supplement an ERMI test when the ERMI test is not providing the answer needed.

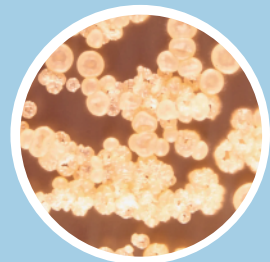
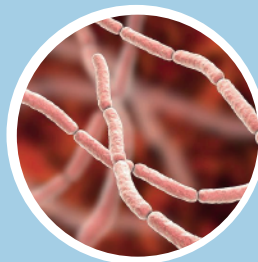
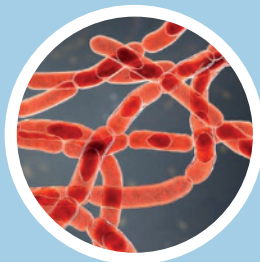
Mycotoxins:

This is a topic of significant interest; however, testing needs to be as comprehensive and diverse as possible; our mycotoxin test uses gold standard technology, known as LCMSMS; we screen for over 70 mycotoxins and biotoxins and provide normal levels, and the report includes a range for each of the targets plus the frequency found in dust samples, with detection limits of ng/gram of sample. Testing is only available for dust samples, not for human use. A complete list of targets is available on our website.



Actino Skin:

This test is for the five most relevant toxic actino in human skin on a sample from the back of the ear taken with a wet swab. This test is also available as a complete Actino skin Index, a biomarker of 33 Human Specific Toxic Actino and 13-Soild Specific Actino Controls.





Actino Plasma and Actino Nsalal:

These two tests are another variant of the Actino Skin test, with a similar option, a report of 5 toxic species for plasma or nasal sample or an extended version with 33 plus 13 species. This test as the Actino Skin and all the human tests are with order or recommendations from professional practitioners, and they will be responsible for the interpretation of the results.

Avian Pathogen:

Bird Pathogen tests for *Cryptococcus neoformans*, *Histoplasma capsulatum*, and *Chlamydophila psittaci*, three central avian infections that can infect humans. The DNA of the three pathogens is detected using quantitative Polymerase Chain Reaction (qPCR). The analysis of *H. capsulatum* is qualitative, with results reported as Detected or Not Detected.



Nosocomial:

We offer 5-panels to choose from; this test is for hospitals rooms, clinics, and for individuals in critical care and facilities or at home; each panel is a list of relevant species, and all of the targets are quantified using DNA, and qPCR methods.

P1 Comprehensive Nosocomial Panel Report critical indicators of fungal contamination concerning the indoor environment of hospitals/health. This broad panel is the first decision for hospitals, healthcare facilities, and chronic patient care at home.

P2 Combination of Asp/Pen 15 Panel Report: Combination of Asp/Pen panel: The most common *Aspergillus* and *Penicillium* species found indoors.

P3 Budget 15 species Mold-Panel target panel for critical indoor indicators of fungal contamination.

P4 Budget 15 Cost-Effective Nosocomial panel to address the concerns of contaminated indoor environments of hospitals and health care facilities.

P5 Top *Penicillium* 15 species commonly found in indoor environments.



C.Aris Plus: WHO Priority Group 1:

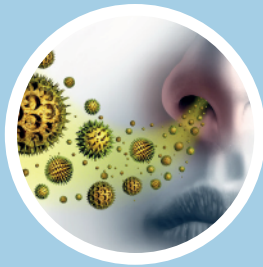
Candida auris, Candida albi cans, Cryptococcus neoformans, Aspergillus fumigatus qPCR method.

Human Bacteroides:

Are gram-negative bacteria that predominantly thrive in the lower gastrointestinal tract of humans and are, therefore, directly associated with fecal contamination. qPCR) is sensitive and reliable for accurately identifying fecal contamination after a potential sewage leak event.

Dust Allergens:

This test is for environmental dust samples collected using a vacuum cone method; the test needs 10 mg of dust and 10-15 days TAT. The test uses a MARIA® multiplex sensitive method that combines monoclonal antibodies with the Luminex Bio-Plex200 multiplexing technology. Targets include mites, mice, rats, cats, dog cockroaches, Alternaria alternate, Aspergillus fumigatus.



How to Order

We have several options for service for individuals and practitioners; our website is a simple and direct option to order our testing services as a single-use or reward program. We have the same opportunity for practitioners, plus a volume discount code or the referral/ affiliate program. Please get in touch with our customer support line or email so we can guide you on the different options that make sense. In addition, we service worldwide and partner with medical and environmental practitioners Affiliation is also an option for advocates; please let us know what works for you.



MYCOTOXIN EXPOSURE

NEUROLOGIA & MOOD

- ADD and/or ADHD
- Headaches
- Insomnia
- Cognitive impairment, brain
- Depression, anxiety, and other mood imbalances
- Lyme disease symptoms [yet a negative Lyme disease test]
- Metallic taste in mouth



RESPIRATORY

- Sinus infections, allergies, asthma
- Shortness of breath



DIGESTIVE

- Leaky gut
- Food sensitivities
- Histamine intolerance
- Recurrent Candida overgrowth [especially if you are adhering to the diet]



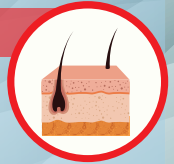
IMMUNE

- Autoimmune disease
- Fibromyalgia, muscle weakness, and joint pain syndrome



SKIN

- Eczema, psoriasis, or rashes
- Static shocks



"Feel better Live better"



PRICE

1

EnviroBiomics, Inc.
www.envirobiomics.com

ERMI

\$240 – \$435

2

EnviroBiomics, Inc.
www.envirobiomics.com

ERMI plus Endo

\$365 – \$623

3

EnviroBiomics, Inc.
www.envirobiomics.com

HERTSMI-2

\$130 – \$277

4

EnviroBiomics, Inc.
www.envirobiomics.com

HERTSMI-2 plus Endo

\$255 – \$465

5

EnviroBiomics, Inc.
www.envirobiomics.com

ENDO (Endotoxin LAL)

\$145 – \$287

6

EnviroBiomics, Inc.
www.envirobiomics.com

FAB2
(Actino plus Mold Score)

\$480 – \$495

7

EnviroBiomics, Inc.
www.envirobiomics.com

SM-AEH
(Actino, Endotoxin,HERTSMI-2)

\$480 – \$495

8

EnviroBiomics, Inc.
www.envirobiomics.com

SM-AEE Actino,
Endotoxin, ERMI

\$565 – \$580

9

EnviroBiomics, Inc.
www.envirobiomics.com

Actino plus HERTSMI-2

\$365 – \$380





PRICE

11

EnviroBiomics, Inc

FAB3 Mold Score
\$240 – \$255

12

EnviroBiomics, Inc

Mycotoxin
\$250 – \$265

13

EnviroBiomics, Inc

Actino
\$245 – \$260

14

EnviroBiomics, Inc

FAB1
(Actino plus ERMI)
\$435 – \$450

15

EnviroBiomics, Inc

EMMA
(10 Mold + 50 Plus Mycotoxins)
\$360 – \$375

16

EnviroBiomics, Inc

Dust Allergens
Choose an option
\$216 – \$351

17

EnviroBiomics, Inc

MOLD-10
\$170 – \$317

18

EnviroBiomics, Inc

Strepto
\$245 – \$260

19

EnviroBiomics, Inc

Human and Total Bacteroides
\$130 – \$262





PRICE

20

EnviroBiomics.Inc

Nosocomial, Penicillium,
Aspergillus
\$143 – \$333

21

EnviroBiomics.Inc

Actino-Skin
\$150

22

EnviroBiomics.Inc

Mycotoxin ELISA
\$240 – \$255

23

EnviroBiomics.Inc

ERMI_Plus
\$240 – \$435

24

EnviroBiomics.Inc

HERTSMI-2_Plus
\$130 – \$277

25

EnviroBiomics.Inc

Avian Pathogen
\$130 – \$277

26

EnviroBiomics.Inc

Mold-Skin
\$150

27

EnviroBiomics.Inc

C. Auris Plus
\$130 – \$277

28

EnviroBiomics.Inc

Actino Index Human
\$195





EnviroBiomics.Inc
Because Health Matters



11550 IH-10 West, Suite 105
San Antonio, Texas 78230



Tel: 210-570-2095



support@envirobiomics.com



Follow us
@EnvirobiomicsSA



Envirobiomics
Instagram



**WE ARE HAPPY TO
WORK WITH SAMPLE
FROM ANY COUNTRY**